



GLOBAL INSTITUTE
OF FORENSIC RESEARCH

2016 IOWA SEXUAL OFFENDER CE TRAININGS

INAUGURAL EVENT



HALF IN-PERSON, HALF ONLINE

The Global Institute of Forensic Research, LLC (GIFR) is proud to present the **2016 Sexual Offender CE Trainings**. GIFR specializes in providing cutting-edge training solutions to mental health, correctional, and legal professionals working with sexual offenders. Dedicated to the development of programming that **promotes evidence-based practices and improves compliance and outcomes**, we have brought together the best trainers in the nation on sexual offenders for an exclusive program. This first-of-its-kind hybrid program is eligible for **CE Hours** for psychologists, nurses, counselors, and social workers. Lawyers and judges, probation and parole officers, and policymakers are also encouraged to attend.

HOW IT WORKS



STEP 1

Attend the
In-Person Training



STEP 2

View the
Online Trainings



STEP 3

Pass a Brief
Quiz



STEP 4

Download Your
Certificate

CONTINUING EDUCATION



American Psychological
Association



American Nurses
Credentialing Center



National Board of
Certified Counselors



Association of
Social Work Boards



The Association
for Addiction Professionals



Nevada State Board
of Nursing



Iowa Board of Psychology
Iowa Board of Social Work
Iowa Board of Behav Sci



Iowa Board of Nursing



Iowa Board of Certification

IN-PERSON TRAINING



DATE & LOCATION

September 16, 2016 (Friday)

Des Moines, Iowa
(Exact Location: TBD)

(8:00 AM - 5:00 PM CT)

HOSTED BY

Iowa Board For The Treatment
Of Sexual Abusers

EVERYTHING YOU NEED TO KNOW ABOUT INTERNET SEX OFFENDERS: CHILD PORNOGRAPHERS, SOLICITORS, AND TRAVELERS

The purpose of this one-day training workshop is to provide participants a better understanding of the fastest growing segment of the sex offender population – Internet sex offenders. Participants will gain the knowledge and skills necessary to conduct psychosexual evaluation, assess risk and also provide recommendations for appropriate management and treatment. An overview of the current state of scientific research will be provided, with a specific focus on developing a better understanding of the similarities and differences between Internet sex offenders and other types of sexual offenders, including conventional contact offenders. The relevant clinical, diagnostic, and risk factors associated with Internet-facilitated sex crimes will be discussed. Psychological assessment techniques, including risk assessment tools, measures of sexual interest, and polygraph assessment, will be reviewed and their applicability in these cases discussed. Differential diagnosis, how to defend the use of various assessment instruments in court, and provision of effective testimony for sentencing mitigation will be discussed using examples from actual cases. Interactive opportunities will be provided for group discussion and feedback among participants.

Suzonne M. Kline, PsyD is the former Administrator of Florida's Sexually Violent Predator Program and a nationally-recognized speaker on issues related to sex offenders. Dr. Kline is currently in independent forensic practice and offers specialized expertise in psychosexual evaluation and risk assessment of Internet sex offenders. Additionally, she offers expert consultation to state and national organizations regarding effective, empirically-based sex offender risk management practices.

Eric A. Imhof, PsyD is President of the Florida Association for the Treatment of Sexual Abusers (FATSA). Dr. Imhof has practiced for over 30 years in the field of sex offender management and has performed thousands of sex offender evaluations and risk assessments on behalf of government agencies, prosecutors and private clients. Former Program Director at the Elaine Gordon Treatment Center and Director of Assessment, Research, and Outcomes for the Brown Schools of Florida, he recently served as Chair of the Department of Juvenile Justice Sex Offender Workgroup.

ALL MEALS PROVIDED

ONLINE TRAININGS

INTELLECTUALLY DISABLED SEX OFFENDERS: APPROACHES TO ASSESSMENT AND MANAGEMENT



Robin Wilson, PhD, ABPP is a researcher, educator, and board certified clinical psychologist who has worked with sexual offenders in hospital, correctional, and private practice settings for more than 30 years. Dr. Wilson has published over 100 scientific articles, book chapters, and other monographs. Past President of the Florida Association for the Treatment of Sexual Abusers, Dr. Wilson routinely serves as an expert witness regarding community risk management.

(2 Hours)

INTRODUCTION TO MOTIVATIONAL INTERVIEWING WITH SEXUAL OFFENDERS



David Prescott, LICSW is Director of Professional Development and Quality Improvement for the Becket Family of Services in New England. ATSA Past President, Mr. Prescott has over 30 years of experience in assessing, managing, and monitoring both the perpetrators and victims of sexual abuse. He is the author of over 10 books and 50 articles and book chapters.

(6 Hours)

THE GOOD LIVES MODEL OF SEX OFFENDER REHABILITATION: WHAT YOU NEED TO KNOW



Pamela Yates, PhD, R.D.Psych is the President of Cabot Consulting and Research Services. Dr. Yates has worked extensively with sexual offenders in correctional and forensic settings as a clinician, researcher, and program developer. Her research on the Good Lives Model of sexual offender intervention has resulted in the publication of books including “Applying the Good Lives and Self-Regulation Models to Sex Offender Treatment: A Practical Guide for Clinicians” and “Building a Better Life: A Good Lives and Self-Regulation Workbook”.

(2 Hours)

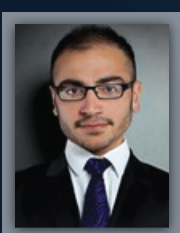
SUICIDE RISK ASSESSMENT IN YOUTH AND YOUNG ADULTS



David A. Jobes, PhD, ABPP, is Professor of Psychology and Co-Director of Clinical Training at The Catholic University of America. His research and writing in suicide has produced numerous publications including several books on the topic of suicide risk. As an internationally recognized suicidologist, Dr. Jobes has spoken to a broad range of audiences, is frequently interviewed in the media, and has testified before congress on the topic of youth suicide.

(3 Hours)

OVERVIEW OF RISK ASSESSMENT FOR SEXUALLY ABUSIVE YOUTH



Jay P. Singh, PhD is Clinical Associate in the Department of Psychiatry and Senior Fellow in the Wharton School of Business at the University of Pennsylvania. Founder and CEO of the Global Institute of Forensic Research, Dr. Singh is the author of over 65 peer-reviewed articles and an experienced thought leader in the area of eLearning in corrections and forensic mental health.

(2 Hours)

REGISTRATION FORM

In-Person + Online Trainings: **\$199 USD**

Online Only: **\$149 USD**

Full Name:

E-Mail:

Phone:

Billing Address:

Payment Method:

Check *

Credit Card

Purchase Order

Card Type *(Visa, MasterCard, Discover):*



Card Number:

Card Expiration Date:

Card CVV:

Referred By *(Optional):*

**Make checks out to Global Institute of Forensic Research, LLC*

Return Form To

Global Institute of Forensic Research, LLC
9888 Windy Hollow Road
Great Falls, VA 22066, USA

Phone: 703-629-5421

E-Mail: services@gifrinc.com

Continuing Education Details:

The Global Institute of Forensic Research, LLC is approved by the American Psychological Association, National Board of Certified Counselors, National Association of Alcohol and Drug Abuse Counselors, and Canadian Psychological Association to sponsor continuing education trainings. The American Nurses Credentialing Center accepts Continuing Education Credit sponsored by the American Psychological Association. The Global Institute of Forensic Research, LLC (provider #1371) is also approved as a provider for social work continuing education by the Association of Social Work Boards (ASWB) www.aswb.org, through the Approved Continuing Education (ACE) program. Social workers should contact their regulatory board to determine course approval. The target audience for these trainings is professionals working with sexual offenders. The In-Person Training is introductory and the Online Trainings are intermediate. The Global Institute of Forensic Research, LLC maintains responsibility for this program and its contents.

Participating in the course will result in 20 Continuing Education Hours. For the In-Person Training, Continuing Education Hours will be awarded to individuals who arrive on time, are present for the duration of the training, and complete the post-training evaluation form. For the Online Trainings, Continuing Education Hours will be awarded to individuals who view the entire video trainings, pass a series of brief quizzes covering the content of each (75% pass threshold), and complete the post-training evaluation forms. To request accommodation for any special needs, please contact services@gifrinc.com. You will receive a response within seven calendar days.

Refund/Cancellation Policy:

You may receive a full refund if you cancel for any reason up to one month prior to the training date. Cancellation requests should be sent via e-mail to the address below. If you experience any technical difficulties during the Online Trainings, please contact services@gifrinc.com. Your difficulty will be addressed within seven calendar days.

Commercial Support:

The Global Institute of Forensic Research, LLC reports no conflicts of interest in the development and sponsorship of this training. The Global Institute of Forensic Research, LLC receives no commercial support for its Continuing Education programs or from its presenters.